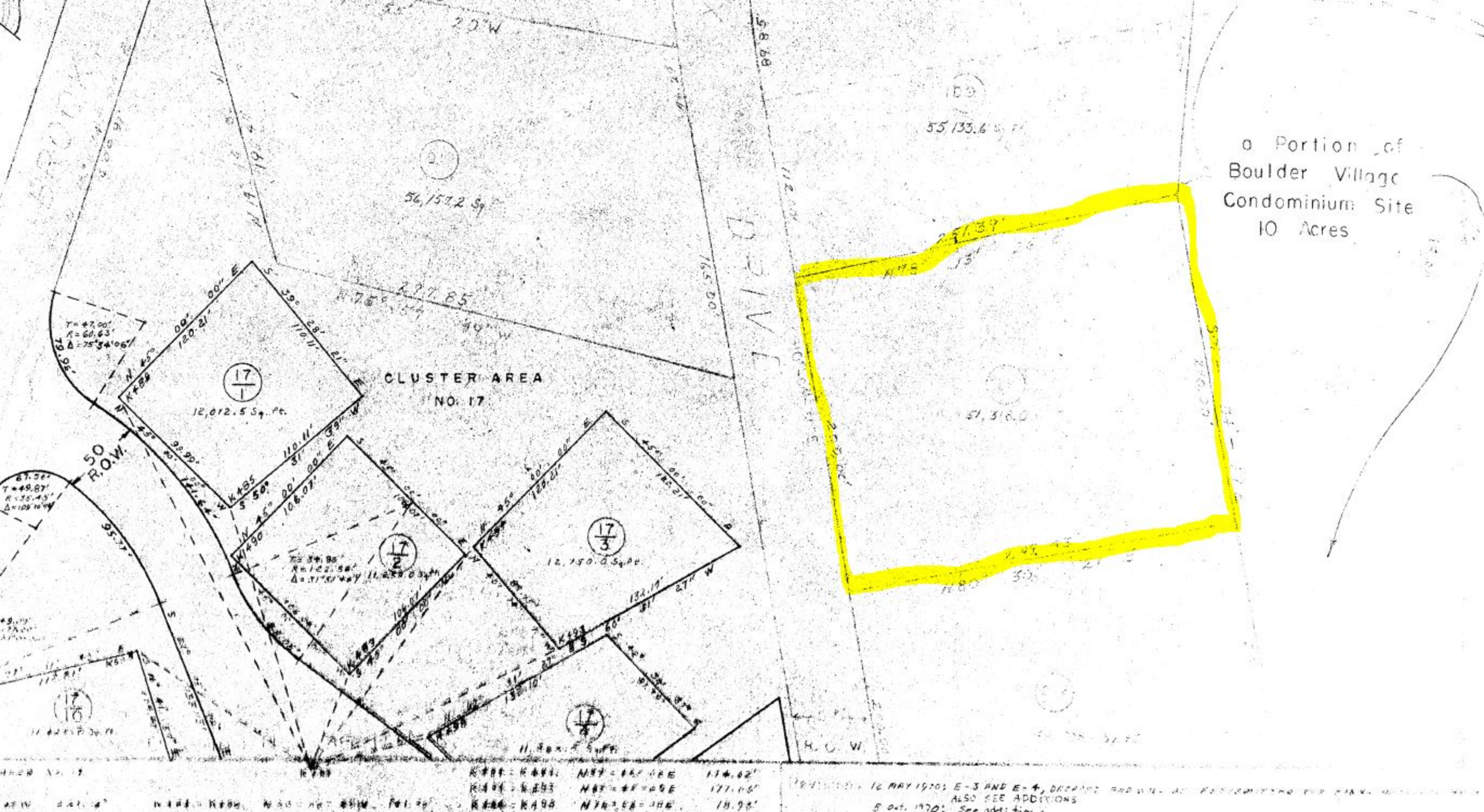


OWNER INFORMATION			SALES HISTORY					PICTURE			
<b>CAMPTON, TOWN OF</b>  12 GEARTY WAY  CAMPTON, NH 03223			<b>Date</b>	<b>Book</b>	<b>Page</b>	<b>Type</b>	<b>Price</b>	<b>Grantor</b>			
			10/22/2018	4396	808	U V 50		BLAKE TR, ADRIAN V			
			06/03/2013	3983	961	U V 99		BLAKE TR, ADRIAN V			
			01/02/2013	1161	88	U V 99		BLAKE, ADRIAN & MARY			
			01/01/1800	0	0	U V 99		UNSPECIFIED			
LISTING HISTORY			NOTES								
01/04/17	JBRL		WOODED								
03/07/11	JB00	MEASUR+LISTED									
10/16/06	JB00	MEASUR+LISTED									
05/10/04	BF00	MEASUR+LISTED									

EXTRA FEATURES VALUATION										MUNICIPAL SOFTWARE BY AVITAR			
Feature Type	Units	Lngh x Width	Size Adj	Rate	Cond	Market Value	Notes	<b>CAMPTON ASSESSING OFFICE</b>					
							<b>PARCEL TOTAL TAXABLE VALUE</b>						
								<b>Year</b>	<b>Building</b>	<b>Features</b>	<b>Land</b>		
							2019	\$ 0	\$ 0	\$ 13,600	Parcel Total: \$ 13,600		
							2020	\$ 0	\$ 0	\$ 13,600	Parcel Total: \$ 13,600		
							<b>2021</b>	<b>\$ 0</b>	<b>\$ 0</b>	<b>\$ 13,600</b>	<b>Parcel Total: \$ 13,600</b>		

LAND VALUATION										LAST REVALUATION: 2019					
<b>Zone:</b> WTRVL EST VAC <b>Minimum Acreage:</b> 1.00 <b>Minimum Frontage:</b> 1										<b>Site:</b> 150 <b>Driveway:</b> <b>Road:</b>					
Land Type	Units	Base Rate	NC	Adj	Site	Road	DWay	Topography	Cond	Ad Valorem	SPI	R	Tax Value	Notes	
EXEMPT-MUNIC	1.000 ac	9,900	E	100	150	100	100	100 -- HIGH	90	13,400	0	N	13,400	TOPO .90 X G VW	
EXEMPT-MUNIC	0.180 ac	x 1,500	X	100				100 -- HIGH	90	200	0	N	200		
										<b>1.180 ac</b>		<b>13,600</b>		<b>13,600</b>	





a Portion of  
Boulder Village  
Condominium Site  
10 Acres

CLUSTER AREA  
NO. 17

17/1  
12,012.5 Sq. Ft.

17/3  
12,150.0 Sq. Ft.

17/2  
11,250.0 Sq. Ft.

17/4  
11,800.0 Sq. Ft.

55,133.6 Sq. Ft.

51,316.0

20° W

DRIVE

50 R.O.W.

$T = 47.00'$   
 $R = 60.63'$   
 $\Delta = 75^\circ 34' 06''$

$T = 49.87'$   
 $R = 35.45'$   
 $\Delta = 102^\circ 16' 09''$

17/6  
11,200.0 Sq. Ft.

N 44° 14' E 112.81'	N 44° 14' E 112.81'	N 44° 14' E 112.81'	N 44° 14' E 112.81'	N 44° 14' E 112.81'	N 44° 14' E 112.81'
N 44° 14' E 112.81'	N 44° 14' E 112.81'	N 44° 14' E 112.81'	N 44° 14' E 112.81'	N 44° 14' E 112.81'	N 44° 14' E 112.81'
N 44° 14' E 112.81'	N 44° 14' E 112.81'	N 44° 14' E 112.81'	N 44° 14' E 112.81'	N 44° 14' E 112.81'	N 44° 14' E 112.81'
N 44° 14' E 112.81'	N 44° 14' E 112.81'	N 44° 14' E 112.81'	N 44° 14' E 112.81'	N 44° 14' E 112.81'	N 44° 14' E 112.81'
N 44° 14' E 112.81'	N 44° 14' E 112.81'	N 44° 14' E 112.81'	N 44° 14' E 112.81'	N 44° 14' E 112.81'	N 44° 14' E 112.81'
N 44° 14' E 112.81'	N 44° 14' E 112.81'	N 44° 14' E 112.81'	N 44° 14' E 112.81'	N 44° 14' E 112.81'	N 44° 14' E 112.81'

12 MAY 1970: E-3 AND E-4, DEPARTS AND WILL BE RE-ASSIGNED FOR PARK...  
 ALSO SEE ADDITIONS  
 5 Oct. 1970: See addition